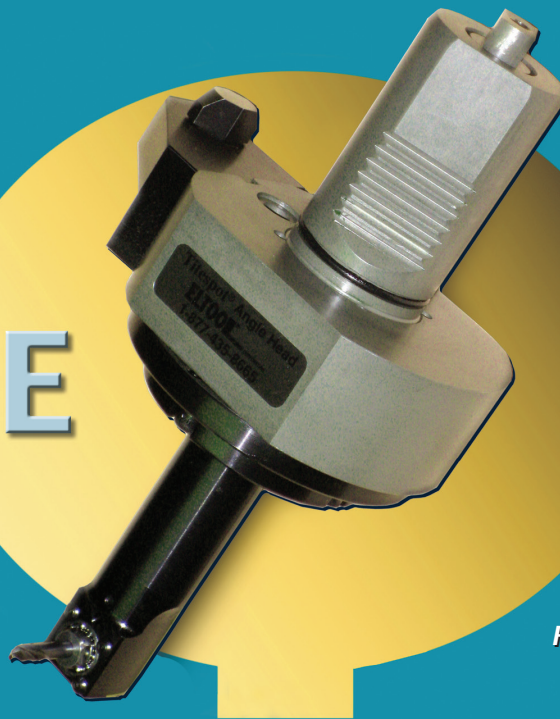


ELTOOL

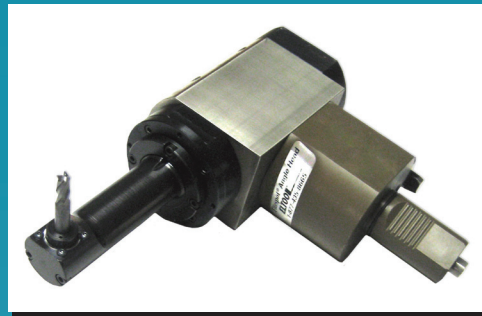
Titespot™ LIVE LATHE TOOLS For I.D. Machining

NEW



Face Mounted Style

- *Eliminate Secondary Operations*
- *Increase Throughput*
- *Improve Accuracy*

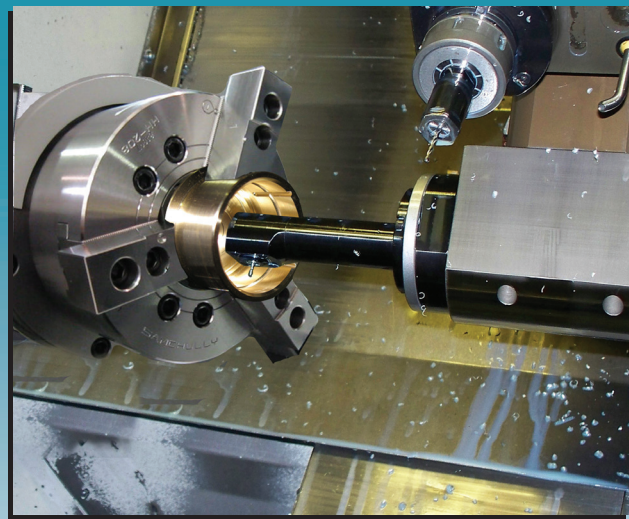


O.D. Mounted Style

A New Technology Solution

Designed to fit popular lathe models with live tooling capability, Eltool's live tool modules combined with our compact right angle heads **machine in bores down to 1 inch in diameter**. Now, **secondary operations** including internal milling, drilling, slotting and grooving **can be integrated into your turning operations**.

The drive modules feature precision angular contact bearings, heat treated and ground shafts, and anti-backlash design. The tools are cooled and lubricated by the filtered machine coolant, **allowing continuous duty cycles**. All heads are **interchangeable** with all drive modules.



Typical Applications

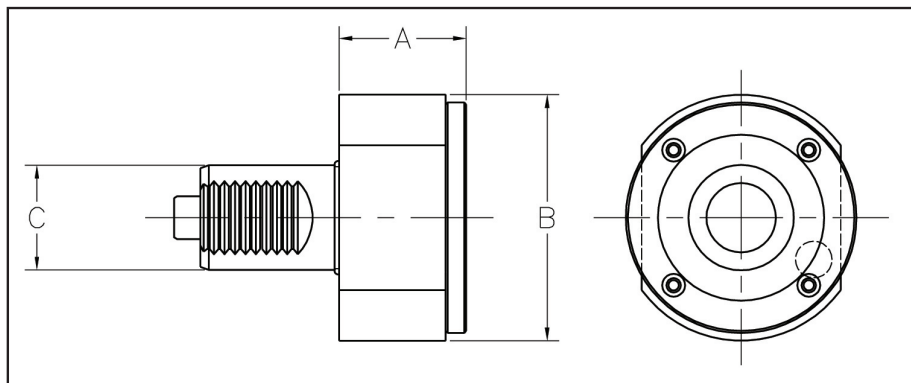
In the photo at near right, the oil grooves in the bushing had previously been machined with an air angle drill on a tool post. The time required to complete this operation **was reduced from 4 hours to 2 minutes**. For a free, brief video of this application, email us at info@eltool.com



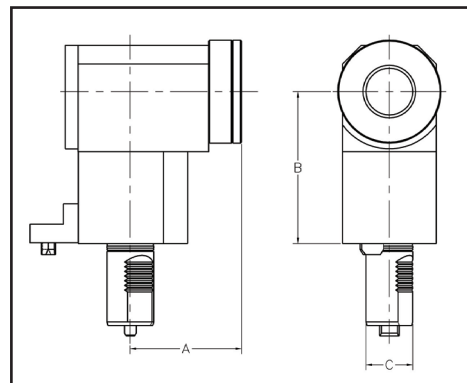
Sizes and Dimensions

Live Tool Modules

Face Mounted



O.D. Mounted



Part No.	MFG	Model	Mount	A	B	C
MZ40A	Mazak	QT, SQT	Face	1.938	3.700	1.575
MZ40B	Mazak	QT, SQT	O.D.	3.750	5.125	1.575
OK40A	Okuma	LT, LB, LU, 15300, CAPT. L370	Face	1.650	3.860	1.575
HY40A	Hyundai-Kia	SKT	Face	1.650	3.700	1.575
HY40B	Hyundai-Kia	SKT	O.D.	2.250	2.550	1.575

Angle Heads

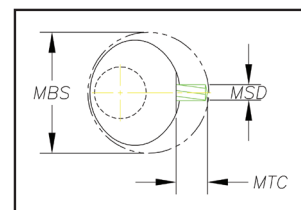
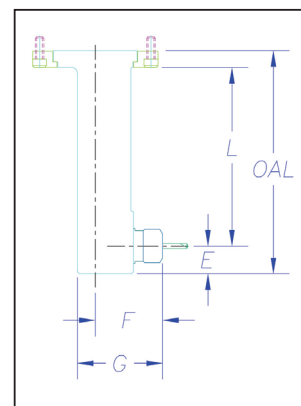
Head Size	Part No.	Spindle	L	E	F	G	OAL	MBS	MSD	MTC
1D 1 Drilling	1DSTTL	Taperlock	3.000	.500	.465	.813	3.875	1.000	.115	.125
	1DSTEL	Eltool	3.000	.500	.688	.985	3.875	1.125	.125	.094
	1DSTW	Weldon	3.000	.500	.500	.813	3.875	1.000	.125	.125
1M 1 Milling	1MSTTL	Taperlock	3.000	.375	.625	.938	3.750	1.125	.115	.125
	1MSTEL	Eltool	3.000	.375	.670	.985	3.750	1.125	.125	.125
	1MST8	ER-8	3.000	.375	1.000	1.312	3.750	1.438	.196	.125
2D 2 Drilling	1MSTW	Weldon	3.000	.375	.730	1.045	3.750	1.312	.250	.188
	2DSTEL	Eltool	4.000	.625	.720	1.125	5.000	1.625	.156	.281
	2DST11	ER-11	4.000	.625	1.250	1.650	5.000	1.875	.275	.140
2M 2 Milling	2DSTW	Weldon	4.000	.625	.906	1.312	5.000	1.500	.312	.125
	2MSTEL	Eltool	4.000	.625	.975	1.375	5.000	1.750	.156	.281
	2MST11	ER-11	4.000	.625	1.538	1.938	5.000	2.250	.275	.140
3D 3 Drilling	2MSTW	Weldon	4.000	.625	1.100	1.500	5.000	1.875	.375	.125
	3DST11	ER-11	5.000	.688	1.595	2.355	6.470	2.875	.275	.390
	3M									
3M 3 Milling	3MST16	ER-16	5.000	.688	1.812	2.625	6.470	3.000	.406	.250
	3MSTW	Weldon	5.000	.688	1.353	2.188	6.470	2.625	.500	.250

Notes:

1. Milling heads are recommended for heavier duty milling applications. They incorporate two preloaded angular contact bearings on the front for improved performance and durability in side load applications. Drilling heads are more compact.

2. "Taperlock" and "Eltool" Spindles are proprietary spindles designed to minimize the profile of the angle heads.

3. Please specify the size of Weldon spindle when ordering.



MBS—Minimum Bore Size
MSD—Maximum Shank Diameter
MTC—Maximum Tool Clearance

How to Order:

To order a Live Tool System (Live Tool Module and Angle Head), specify both part numbers separated by a dash. **Example:** A Live Tool System consisting of a Live Tool Module for an O.D. mount Mazak lathe and a Size 2M Angle Head equipped with an ER-11 Spindle, is part number **MZ40B-2MST11**.

For Technical Assistance
Call toll-free
1-877-4ELTOOL (435-8665)

Ask about our 30 day Trial!

**For more information and
to stay up-to-date,
visit our website at
www.eltool.com**

ELTOOL

ELTOOL Corporation 1665 Central Ave. Cincinnati, OH 45214
Ph: 513 723-1772 Fax: 513 721-8974 Email: info@eltool.com